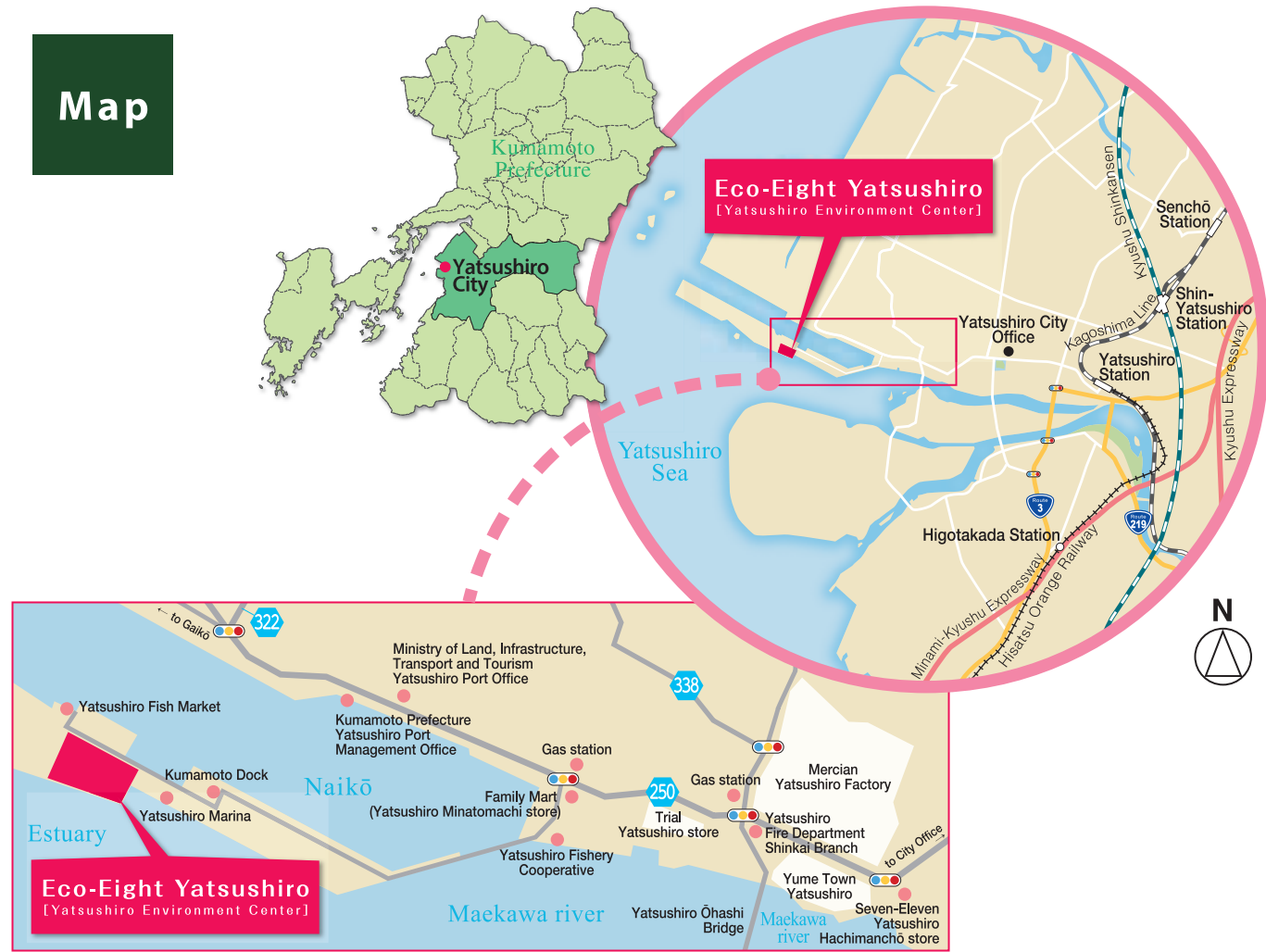


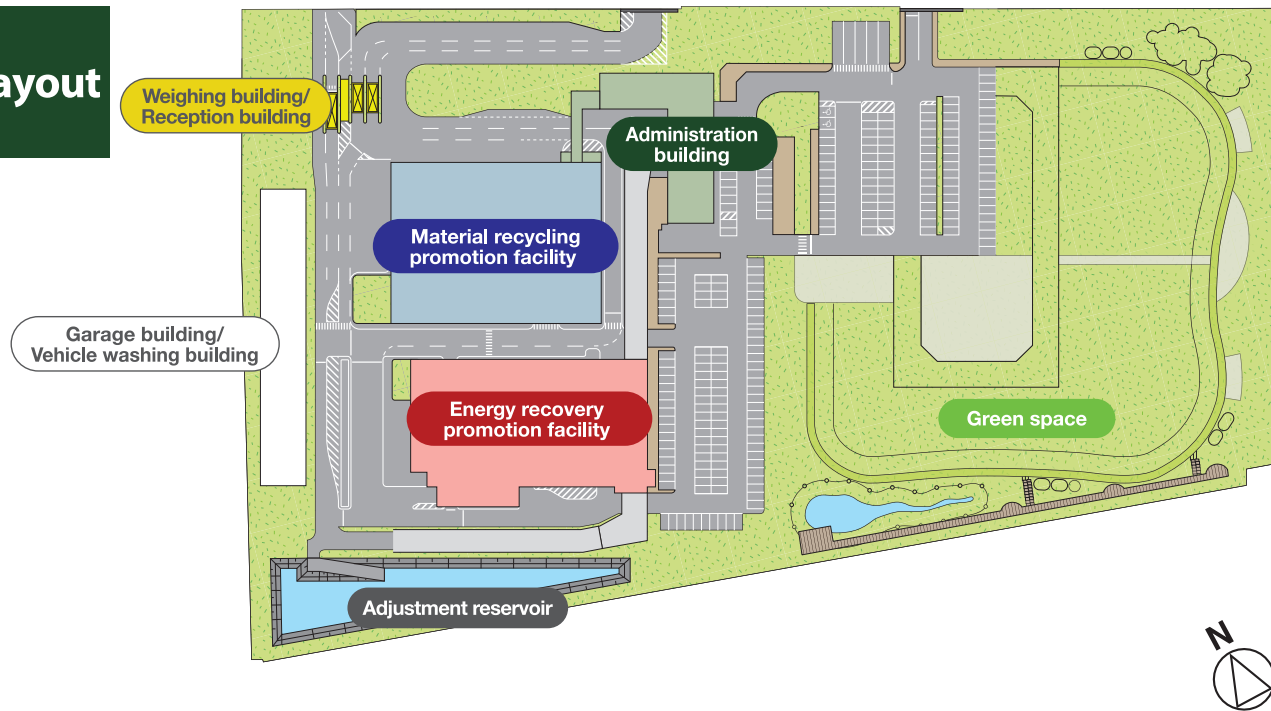
Map



Eco-Eight Yatsushiro

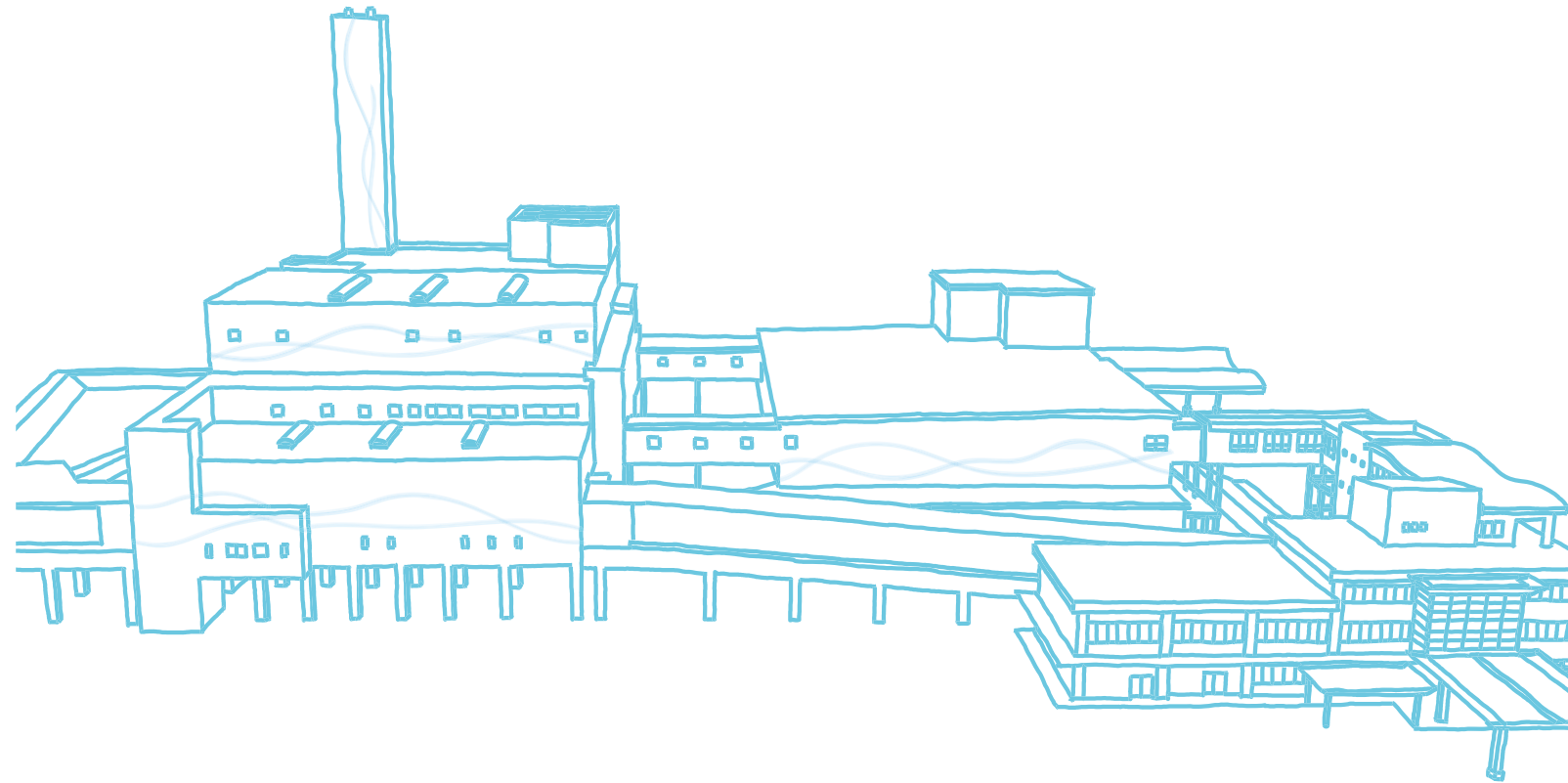
[Yatsushiro Environment Center]

Layout

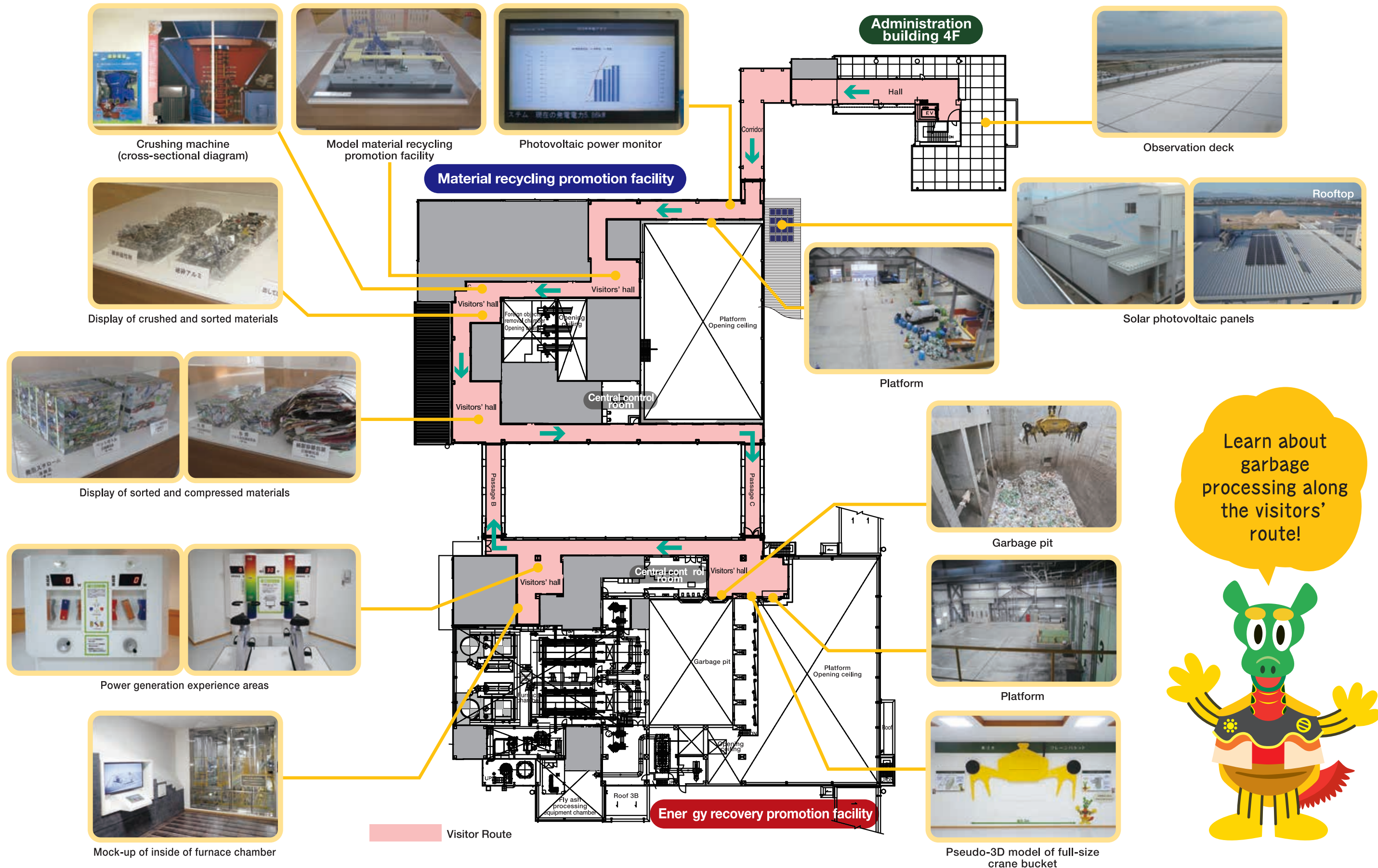


Eco-Eight Yatsushiro

[Yatsushiro Environment Center]



Visitor Route (details of the facility tour)

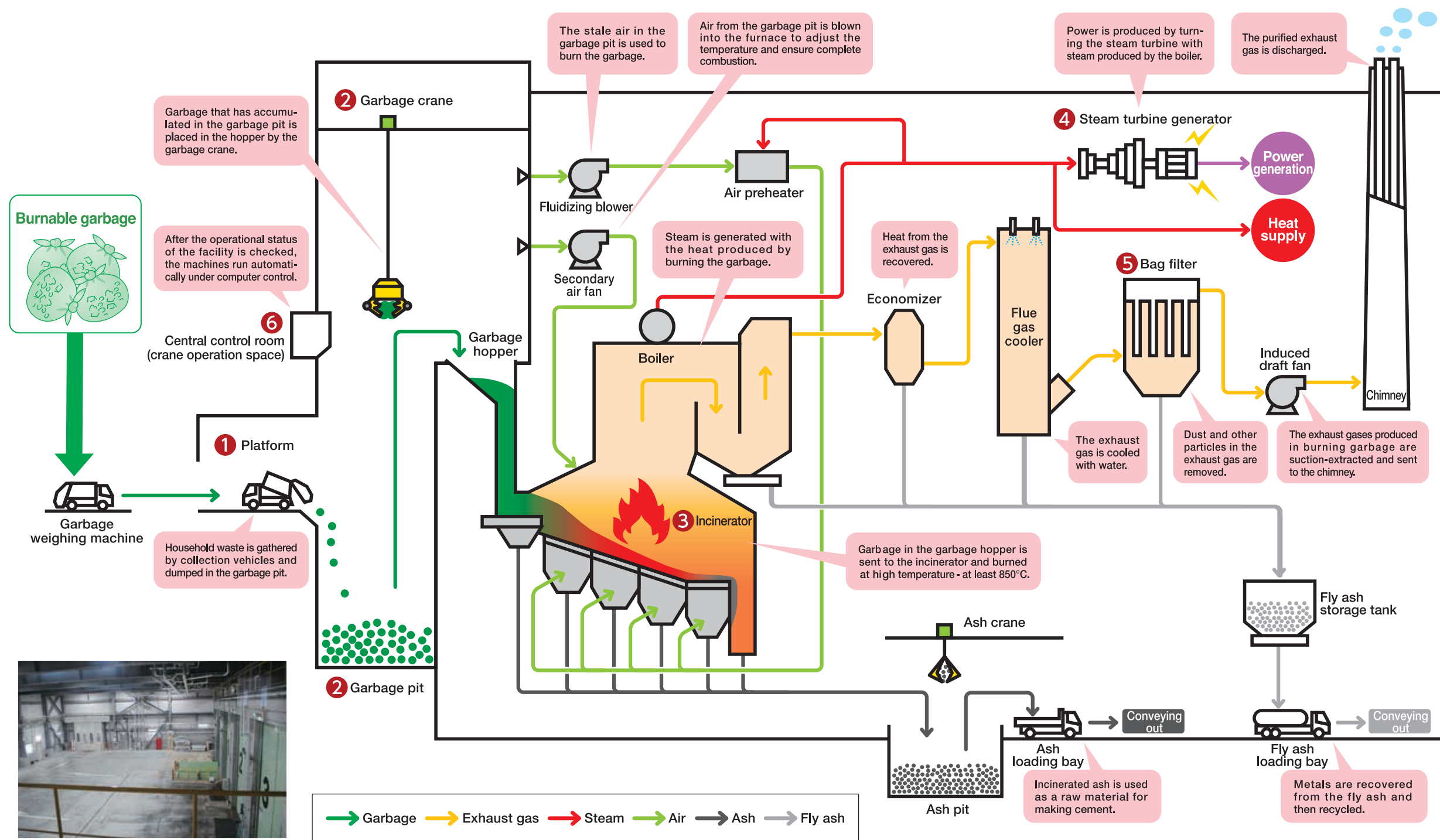


Learn about garbage processing along the visitors' route!



We burn your household waste, clean the ash and exhaust gases, and use the heat produced through combustion to generate power.

Energy Recovery Promotion Facility (Garbage Incineration Facility) Processing Flow



1 Platform



2 Garbage pit and garbage crane



3 Incinerator



Incinerator interior



4 Steam turbine generator



5 Bag filter

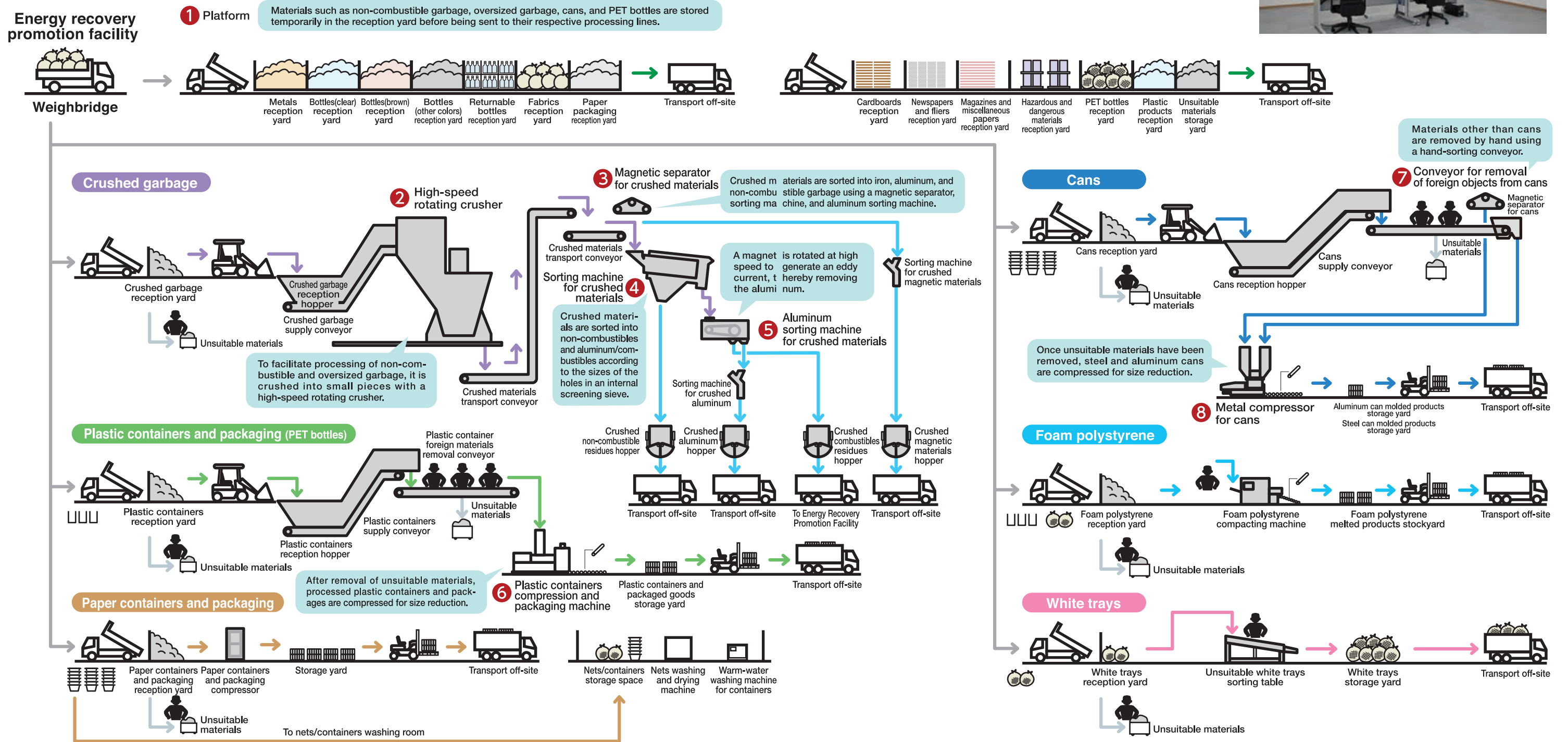


6 Central control room

We sort appropriate materials out of your household waste for reuse as recyclable resources.

Material Recycling Promotion Facility (Recycling Facility) Processing Flow

Central control room
Computers are used to run and halt machines in the plant, and to monitor the site interior.



1 Platform



2 High-speed rotating crusher



3 Magnetic separator for crushed materials



4 Sorting machine for crushed materials



5 Aluminum sorting machine for crushed materials



6 Plastic containers compression and packaging machine



7 Conveyor for removal of foreign objects from cans



8 Metal compressor for cans